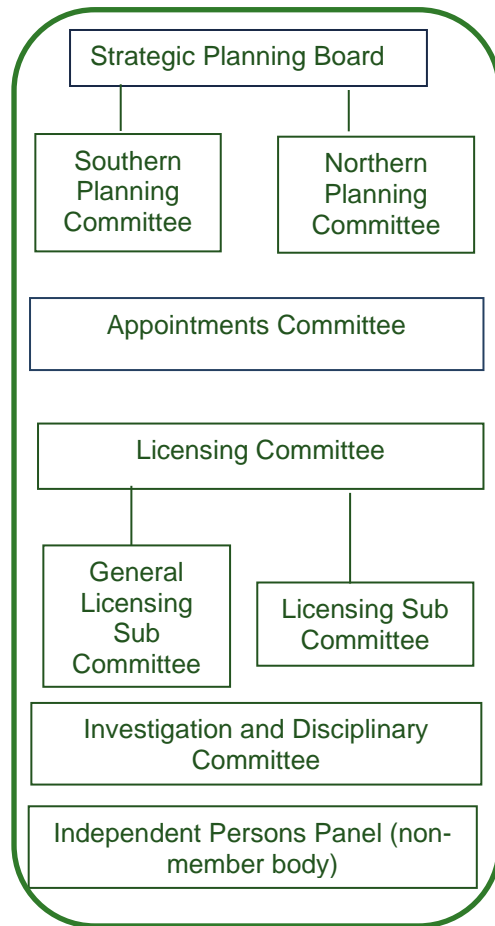


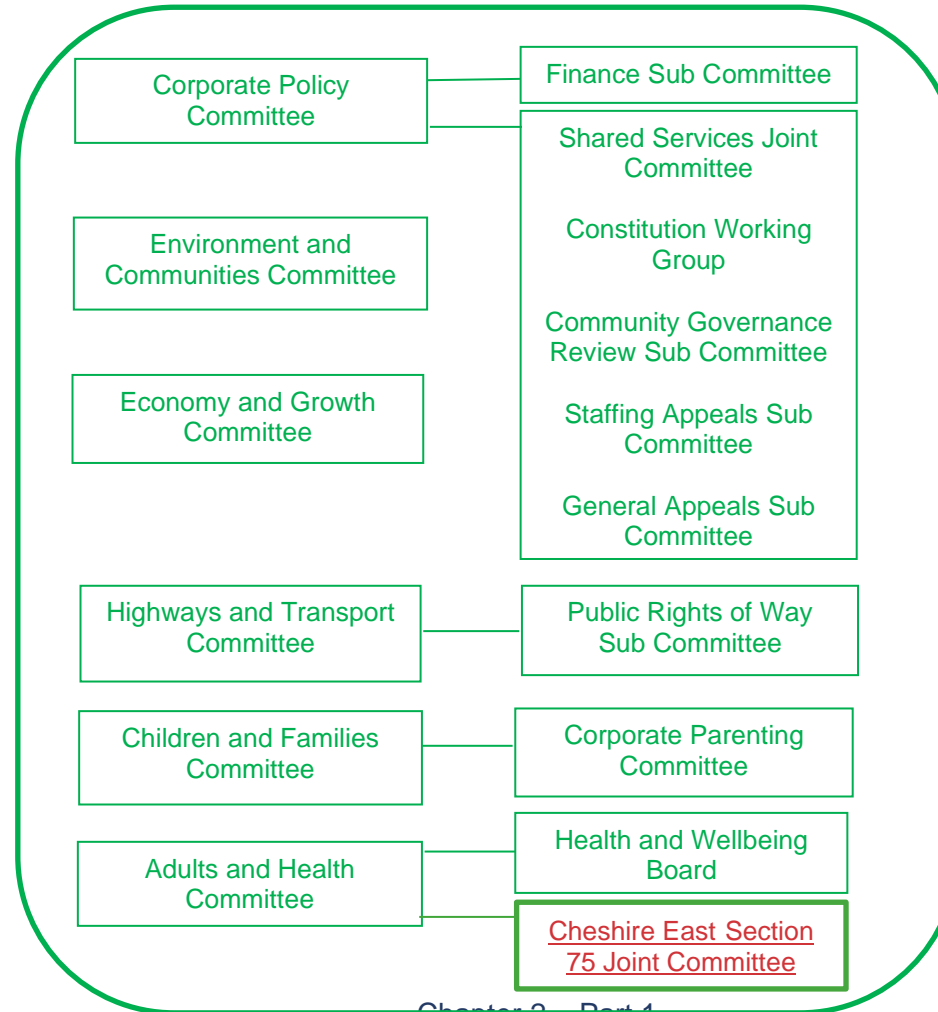
Chapter 2 – Part 1: Committee Structure

Council

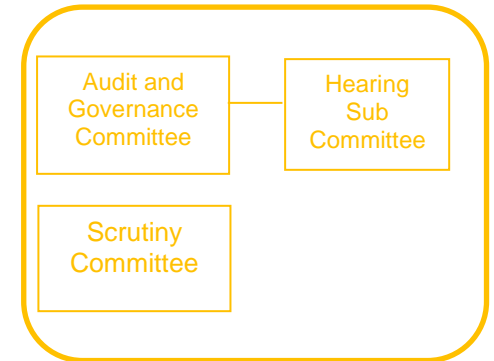
Regulatory and other Committees



Service Committees



Oversight Committees



Cheshire East Section 75 Joint Committee – Terms of Reference

Establishment and Purpose of the Committee

- 1 The Section 75 Joint Committee ('Committee') is a meeting of Cheshire East Council (CEC) and NHS Cheshire Clinical Commissioning Group (CCG). On 1 July 2022 the functions and responsibilities of the CCG will transfer under the Health & Care Act 2022 to the Cheshire and Merseyside Integrated Care Board. Existing joint agreements, such as the Section 75 Agreement ('S75 Agreement'), and agreed Terms of References for joint committees will be inherited and adopted by the ICB. As such all references to 'CCG' shall now referred to as 'ICB' to reflect the change to take effect from 1st July 2022.
- 2 The Committee will ensure delivery of outcomes in the priority areas of focus set out in the S75 agreement on 1st April 2022 between CEC and the ICB and will work towards the future intentions set out in Schedule 1 Part 3 of the S75 Agreement.
- 3 The Cheshire East Section 75 Joint Committee ('the Committee') will facilitate bringing together a single commissioning voice to ensure the design and implementation of new models of care that deliver the outcomes required for the Cheshire East population.
- 4 The Committee will support CEC and the ICB to deliver national requirements, including but not limited to the NHS Long Term Plan, and Spending Review, within Cheshire East.

Membership

- 5 The membership of the Committee comprises the Director of Adults, Health & Integration (CEC) and the Cheshire East Place Director (ICB) or any other substitute nominated by those members.
- 6 Membership of the Committee may change if the scope of the Committee changes. Membership changes will need to be agreed by the member organisations of the Committee.

Delegations to the Executive Director (Adults, Health & Integration)

- 22 The Executive Director (Adults, Health & Integration) holds the statutory role for the Council of the Director of Adult Social Services (required by Section 6 of the Local Authority Social Services Act 1970).
- 23 The Executive Director (Adults, Health & Integration) is given delegated power to take any decisions in relation to the following areas of the Council's operations and services, subject to the terms of this Constitution:

Adult Social Care Operations

- Adult Social Care Services – Community Teams
- Adult Social Care – Hospital Teams
- Care4CE
- Mental Health and Learning Disability Services
- Adult Safeguarding

Public Health

- Public Health Intelligence
- Health Improvement
- Public Health Protection and the Wider Determinants of Health

[Section 75 of the National Health Service Act 2006 and NHS Bodies and Local Authorities Partnership Arrangements Regulations 2000](#)

Commissioning

- Integrated commissioning - Communities and Public Health commissioning, contract management and quality assurance
- Integrated commissioning - Children's commissioning, contract management and quality assurance
- Integrated commissioning – Adult Social Care commissioning, contract management and quality assurance
- Adult Social Care Business Support and Finance

Public Sector Transformation Programme

- Delivery of the Public Sector Transformation Programme